

Endre fra PPPOE tilkobling til DHCP for Belkin Ruter:

Steg 1.

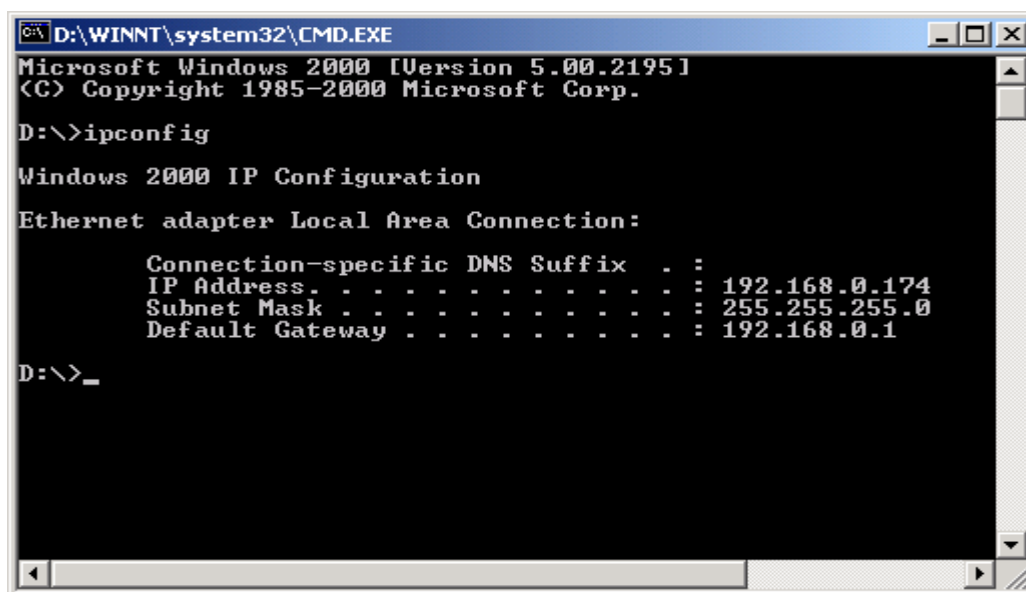
For å gjøre endringer på din ruter må pcen din være tilkoblet ruterens med kabel i en av Lan portene. På denne ruterens merket med 1,2,3,4.



Først må du vite ip-adressen til ruterens din. Den kan du finne ved å bruke pc'en. Finn frem til menyen nederst i venstre hjørne. Trykk START og KJØR, tast CMD i tekstfeltet og trykk OK.

I vinduet som nå åpner seg taster du ipconfig og trykker ENTER knappen(linjeskift). Da kommer det en del tekst opp i vinduet, og under "Ethernet-kort Lokal tilkobling:" finner du en ip-adresse til høyre for "Default gateway". Dette er ruterens ip-adresse.

Eksempel:



```
D:\WINNT\system32\CMD.EXE
Microsoft Windows 2000 [Version 5.00.2195]
(C) Copyright 1985-2000 Microsoft Corp.

D:\>ipconfig

Windows 2000 IP Configuration

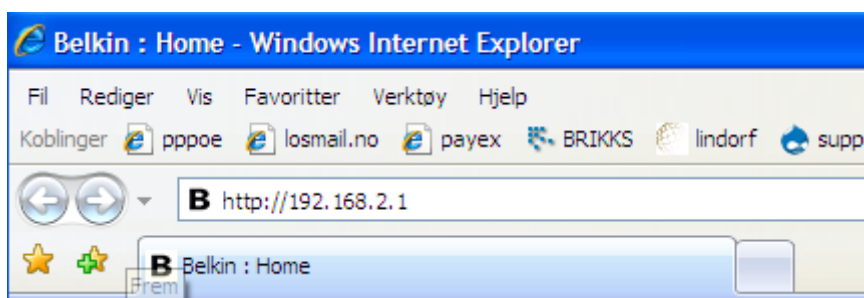
Ethernet adapter Local Area Connection:

    Connection-specific DNS Suffix  . : 
    IP Address. . . . .                : 192.168.0.174
    Subnet Mask . . . . .              : 255.255.255.0
    Default Gateway . . . . .          : 192.168.0.1

D:\>_
```

Steg 2.

Start Internet Explorer på din pc og skriv inn ip adressen til ruterens i adressefeltet. For Belkin er dette 192.168.2.1



Steg 3.

Hvis du har skrevet inn riktig ip adresse i steg 2, så vil innloggingsvinduet komme frem. Standard innlogging er:

Passord: blank

Hvis du har tidligere laget et eget passord på ruterens skal du bruke dette.

Login

Before you can change any settings, you need to log in with a password. If you have not yet set a custom password, then leave this field blank and click "Submit."

Password

Default = leave blank

Clear Submit

Steg 4.

Når du har logget deg inn kommer bilde under frem. Du skal da trykke på "connection type"

BELKIN Router Setup Home | Help | Login | Internet Status: **Not connected**

LAN Setup
LAN Settings
DHCP Client List
Internet WAN
Connection Type
DNS
MAC Address

Wireless
Channel and SSID
Security
WiFi Protected Setup
Use as Access Point
MAC Address Control

Firewall
Virtual Servers
Client IP Filters
MAC Address Filtering
DMZ
DDNS
WAN Ping Blocking
Security Log

Utilities
Restart Router
Restore Factory Defaults
Save/Backup Settings
Restore Previous Settings
Firmware Update
System Settings

Status

You will need to log in before you can change any settings.

Language

Current Language	English
Available Languages	English Deutsch Français Español Nederlands Italiano 简体中文 繁體中文 日本語 한국어

Version Info

Firmware Version	1.00.00 (Jul 3 2008 22:55:48)
Boot Version	V0.13
Hardware	F5D9231-4v1(01)
Serial No.	12625923100033

LAN Settings

LAN/WLAN MAC	00:1C:DF:E4:DA:99
IP Address	192.168.2.1
Subnet Mask	255.255.255.0
DHCP Server	Enabled (No Clients)

Internet Settings

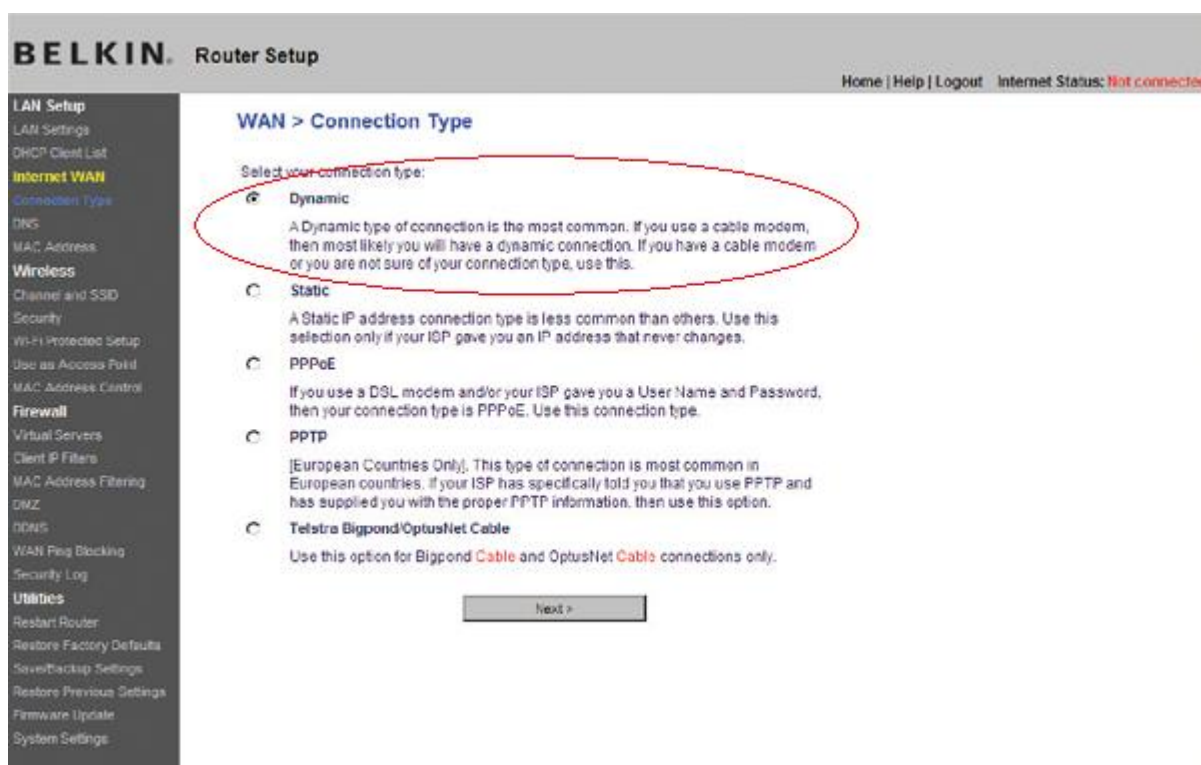
WAN MAC Address	00:1C:DF:E4:DA:9A
Connection Type	Dynamic
WAN IP	0.0.0.0
Subnet Mask	0.0.0.0
Default Gateway	0.0.0.0
DNS Address	0.0.0.0

Features

Firewall Settings	Enabled
SSID	Belkin_Wireless_E4DA99
Security	Disabled
UPnP	Enabled
Remote Management	Disabled
WPS	Enabled

Steg 5.

Når du har trykket på connection type så kommer bilde under frem og du skal da trykke på **"Dynamic"** og trykke på **"next"**



BELKIN. Router Setup Home | Help | Logout Internet Status: **Not connected**

LAN Setup
LAN Settings
DHCP Client List
Internet WAN
Connection Type
DNS
MAC Address
Wireless
Channel and SSID
Security
Wi-Fi Protected Setup
Use as Access Point
MAC Address Control
Firewall
Virtual Servers
Client IP Filters
MAC Address Filtering
DMZ
DDNS
WAN Ping Blocking
Security Log
Utilities
Restart Router
Restore Factory Defaults
Save/Backup Settings
Restore Previous Settings
Firmware Update
System Settings

WAN > Connection Type

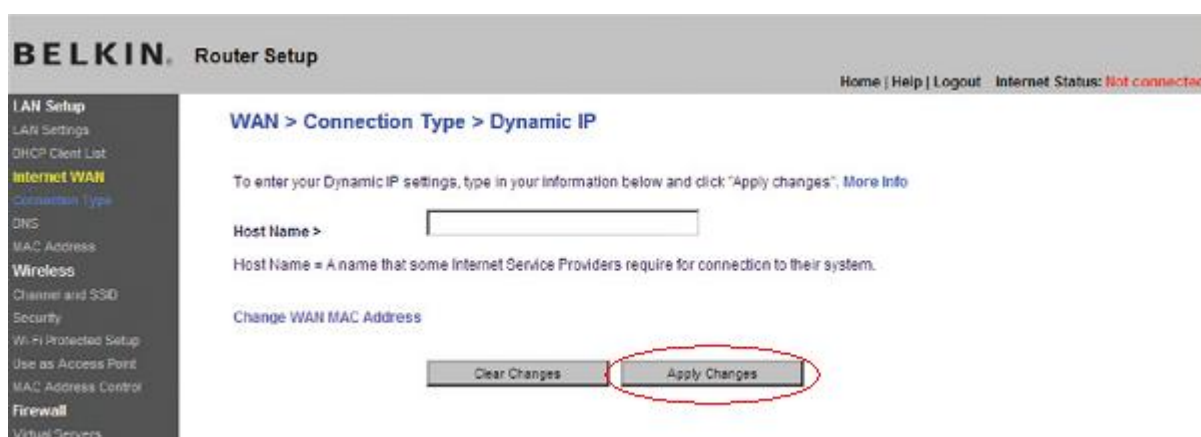
Select your connection type:

- Dynamic**
A Dynamic type of connection is the most common. If you use a cable modem, then most likely you will have a dynamic connection. If you have a cable modem or you are not sure of your connection type, use this.
- Static**
A Static IP address connection type is less common than others. Use this selection only if your ISP gave you an IP address that never changes.
- PPPoE**
If you use a DSL modem and/or your ISP gave you a User Name and Password, then your connection type is PPPoE. Use this connection type.
- PPTP**
[European Countries Only]. This type of connection is most common in European countries. If your ISP has specifically told you that you use PPTP and has supplied you with the proper PPTP information, then use this option.
- Telstra Bigpond/OptusNet Cable**
Use this option for Bigpond Cable and OptusNet Cable connections only.

Steg 6

Her skal du ikke endre noe kun trykke på **"apply changes"**

Etter at du har lagret innstillingene, så ta ut strømmen på ruteren og la den starte på nytt. Da vil ruter få automatisk ip adresse og pc vil automatisk logge seg på ruter. Det kan ta noen minutter etter en restart av ruterens at pc logger seg på.



BELKIN. Router Setup Home | Help | Logout Internet Status: **Not connected**

LAN Setup
LAN Settings
DHCP Client List
Internet WAN
Connection Type
DNS
MAC Address
Wireless
Channel and SSID
Security
Wi-Fi Protected Setup
Use as Access Point
MAC Address Control
Firewall
Virtual Servers

WAN > Connection Type > Dynamic IP

To enter your Dynamic IP settings, type in your information below and click "Apply changes", [More Info](#)

Host Name >

Host Name = A name that some Internet Service Providers require for connection to their system.

Change WAN MAC Address